

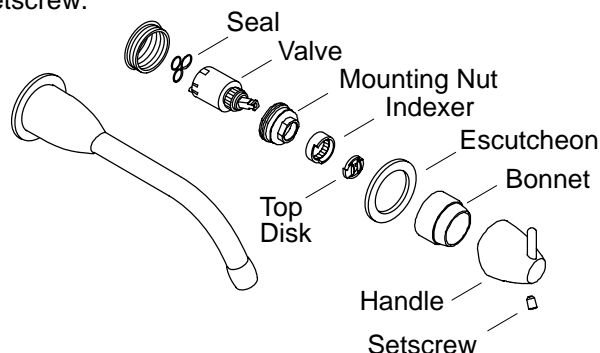
**TOOLS REQUIRED (DEPENDING ON
FAUCET STYLE):**

- Adjustable wrench
- 1/8" hex wrench
- Torque wrench
- Phillips head screwdriver

REMOVAL OF CERAMIC VALVE:

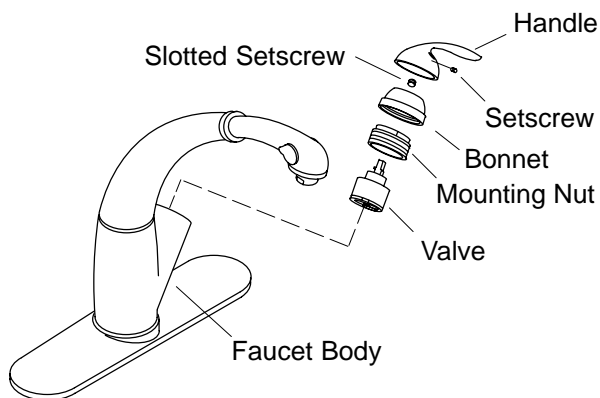
Turn off the water supply. Lift faucet handle to relieve water pressure.

Falling Water: remove handle by removing the setscrew.



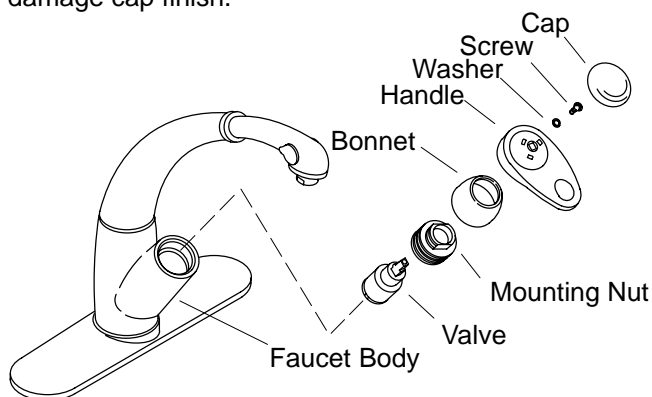
Unscrew bonnet by hand. Unscrew valve mounting nut. Gently loosen and lift out valve.

Avatar (side handle): remove handle by removing the setscrew using a 1/8" hex wrench.



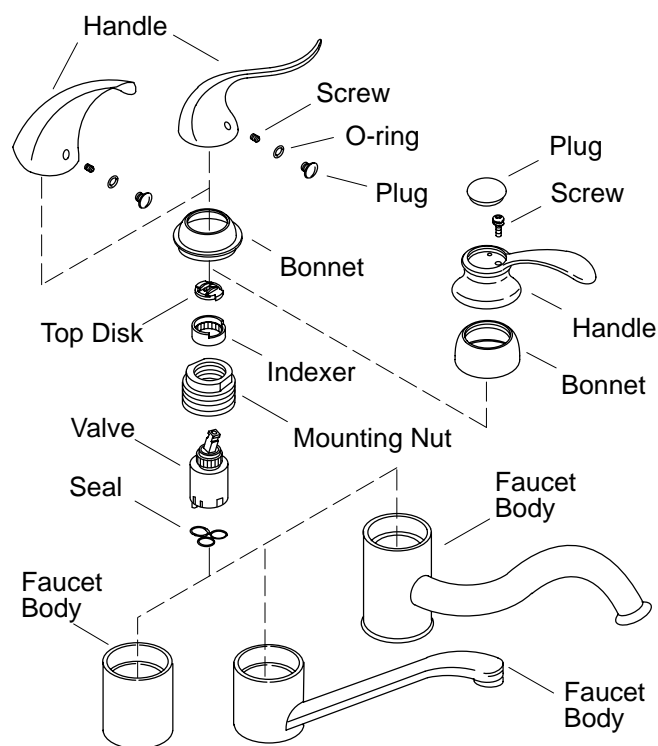
Remove the slotted setscrew from the valve stem. Unscrew the bonnet by hand. Unscrew valve mounting nut. Gently loosen and lift out valve.

Avatar (front handle): remove handle by lifting off the cap using thin blade screwdriver, being careful not to damage cap finish.



Remove screw and washer. Lift off handle. Unscrew bonnet by hand. Unscrew valve mounting nut. Gently loosen and lift out valve.

Coralais and Fairfax: remove handle by prying off the plug button and O-ring, then unscrew the screw.



Lift off handle. Unscrew bonnet by hand. Unscrew valve mounting nut. Gently loosen and lift out valve.

INSERT NEW CERAMIC VALVE:

All faucets: Insert new ceramic valve. Line up tabs on valve bottom with faucet bottom alignment holes. Install mounting nut. If a torque wrench is available, tighten the mounting nut to 9 ft. lbs, otherwise tighten 1/4 turn past hand tight. Reinstall handle.

Turn on water supply.