



Totally Enclosed Relay

Operates in Any Position
Isolated Coil and Mounting Bracket

90-360 THRU 90-486 WR/RBM TYPE 184

Heavy-Duty General Purpose Relay Operates in Any Position

FEATURES

- Compact, totally enclosed design.
- For heating and cooling applications and general switching.
- Quiet, reliable and economical.

SPECIFICATIONS

Temperature Range	–40°F to 150°F
Mechanical Life (no load)	1,000,000 operations, 30 operations/min.
Electrical Life (rated load)	100,000 operations, 6 operations/min.
	Load test making inrush rating (0.4 to 0.5 P.F.); breaking 100% continuous rating (0.65 to 0.8 P.F.)
Outline Drawings	See page 196
Weight (approximate)	3 oz
Agency	U.L. file number E12139 or E22381 C.S.A. file number LR13360
Coils, Frequency	50/60 Hz
Coils, Insulation	Class B
Coils, Termination	1/4" Quick Connect
Coils, Operate	85% of nominal coil voltage; 110% maximum safe operate
Coils, Duty Cycle	Continuous

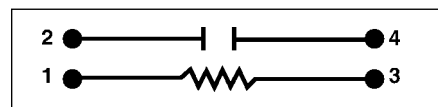
SINGLE POLE DOUBLE THROW (SPDT) ISOLATED CONTACTS (SPNO/SPNC)

Steveco Model Number			Coil Voltage AC (50/60 Hz)	Res DC OHMS	Coil Data		Inrush VA
SPNO	SPDT	SPNO/SPNC			Nom. Current MA	Nominal VA Sealed	
90-360	90-370	90-380	24	77	125	3	4
90-362	90-372	90-382	120	1,800	25	3	4
90-364	90-374	90-384	208/240	7,000	12.5	3	4
90-466	90-476	90-486	277	11,000	10.8	3	4

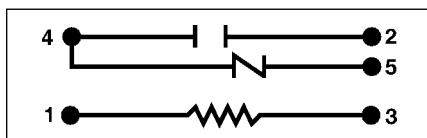
CONTACT RATING

Inductive	Resistive
14 Amps. Continuous 18 Amps. Inrush @ 125 VAC	25 Amps. Continuous @ 277 VAC
8 Amps. Continuous 48 Amps. Inrush @ 250 VAC	
7 Amps. Continuous 42 Amps. Inrush @ 277 VAC	

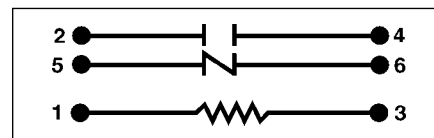
WIRING DIAGRAMS



SPNO



SPDT



SPNO/SPNC